

MR055

Ethernet Board

MR055 Ethernet Board is a specially design for MR350MKII and MR350TA series.

The main function of the MR055 is to *network-enable* existing serial devices. Using the MR055 you can add an Ethernet port practically to any serial device with RS232 interface, and communicate with your serial device from any PC (or other device) to LAN.

If your LAN has a direct connection to the Internet, then you can access and control your serial device from anywhere in the world!

1. Specifications

Specifications

Ethernet Interface	Auto-detecting 10/100 Mbps
Serial Interface	TTL-level RS232 RS232 signals: TxD, RxD, RTS, CTS, DTR, DSR, DCD, GND
Network Protocols	ICMP, ARP, IP, TCP, UDP, DHCP, Telnet, HTTP, SNMP, SMTP
Management	Web browser, serial console, Telnet console, or Windows utility library for developing your own utility
Power Supply	DC 5V \pm 5%, 290mA
Operation Temperature	0-70°C
Operating Relative Humidity	0-90%

Network port pin assignments (TTL level)

Pin	Signal name
1	TX (+)
2	TX (-)
3	RX (+)
4	RX (-)
5	NC
6	Link
7	+5V (LED)



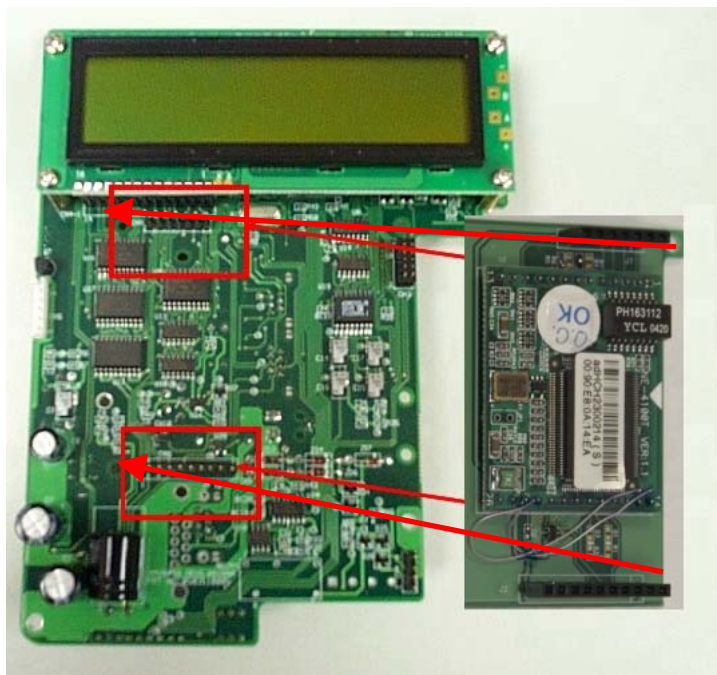
Serial Port PIN Assignments

PIN	Signal Name
1	+5V
2	GND
3	RxD (in)
4	TxD (out)
5	Reset (Low)
6	N/A
7	System using
8	System using
9	N/A
10	+5V (LEDs)

2. Installation

1.1 Hardware Installation

Install MR055 to MR350 series terminal [un-plug power first]
Plug power to MR350 series
Connect RJ-45 cable to MR terminal.

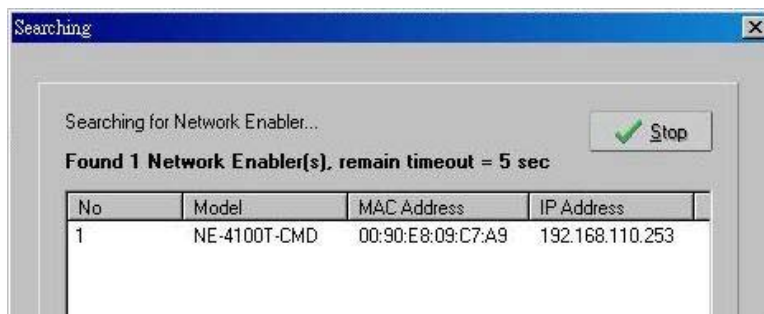


2.2 Initial Setup on MR350MKII/MR350TA side.

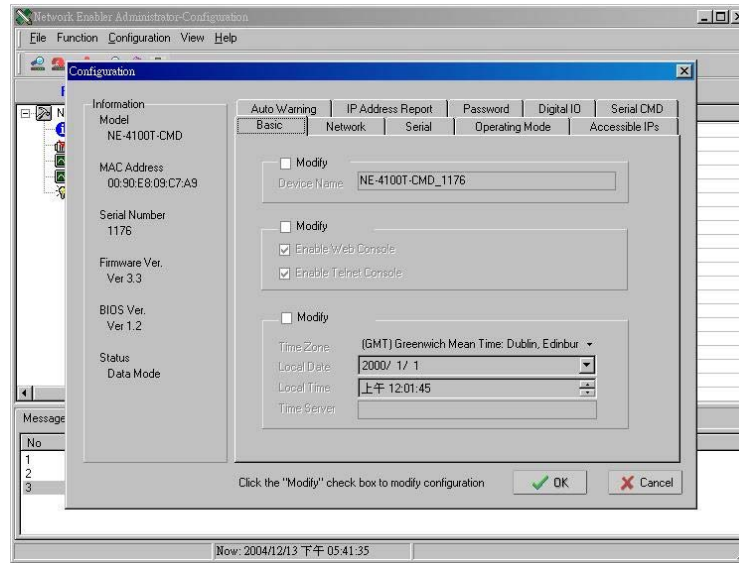
Press **Alpha + F5** (enter supervisor mode)
Select **1)DEVC** then select **RS485/232** by pressing **Enter** .
Press **∇** key to select **ETHERNET** then press **Enter** .
Select **MULTI-POINT**, **Enter**, **A**, **Enter**,
Set Baud Rate to **38,400** by **∇** key, then **Enter**.
Select **8 DATA Bits**, then **NONE Parity**, then **1** and then **Enter**.
Press **Alpha + F5** to Exit supervisor mode.

3.3 Setup on PC side.

- Install MR055 Ethernet INITIAL PROGRAM from http://adc.unitech.com.tw/pub/CS/software/needm_setup_Ver2.9_Build_07031509.zip
- **Software Setup:** Install **Network Enabler Administrator** normally, and start it up. The software will automatically scan for the cradle; when it is found, you will see a window on your screen as shown below.



- After the scan is completed, select the desired unit and open it up. It will show configuration screen like below.



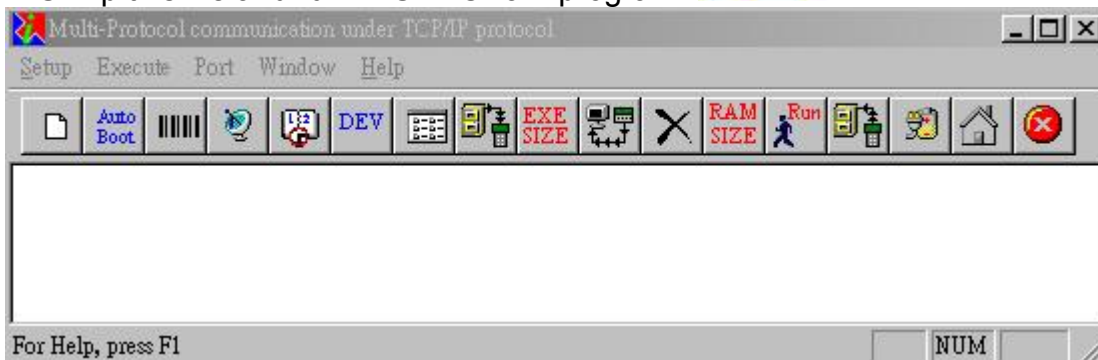
In this screen, you can setup many aspects of the cradle’s Ethernet behavior. The first thing to take note is the “Modify” check box. This is a safety feature that prevents people from accidentally changing the setup. You can view all setup information in detail with the box unchecked, but you cannot change anything without checking the “Modify” box. To modify the setup information, check the “Modify” box and the corresponding category will allow the setting to be changed. When done, click “OK” to save, “Cancel” to abort.

When using this cradle with Multi-TCP, you need to have the unit set to TCP Server mode with port set at 3000, and the proper/legal IP within your network. Then you may access the remote cradle unit from your desktop with Multi-TCP by inputting the IP address of the cradle into Multi-TCP.

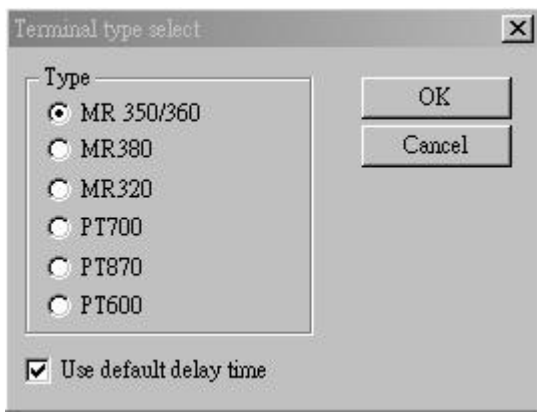
- Download the communication program MULTCP32 from <http://www.adc.unitech.com.tw/pub/cs/software/Multi32/dll24.zip>



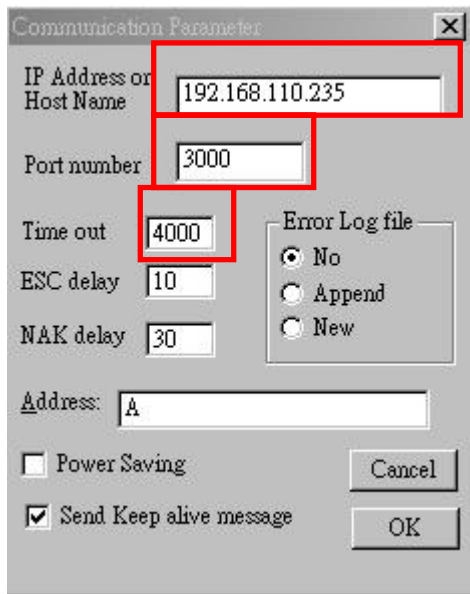
- Unzip this file and run “MUL TCP32” program



- From Setup/Terminal to select MR350 type terminal.



- From Setup/Parameter to select proper parameter setting.



Please note:

1. the IP address and Port number must be same as previous setting in **Network Enabler Administrator** mentioned above.
2. the Time out has to at least 4000 ms.

- Click icon to make Warm Start for MR terminal.
When you heard a beep, it means MR055 has been successful installed and ready for communication.

